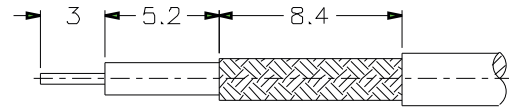
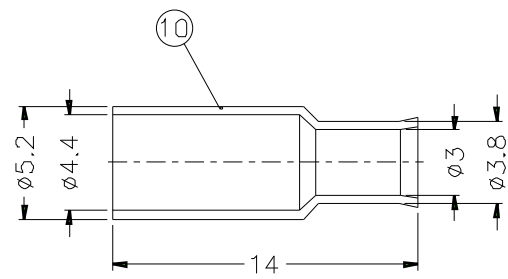
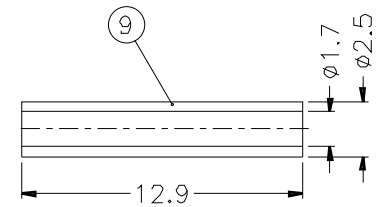
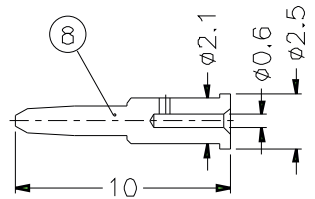
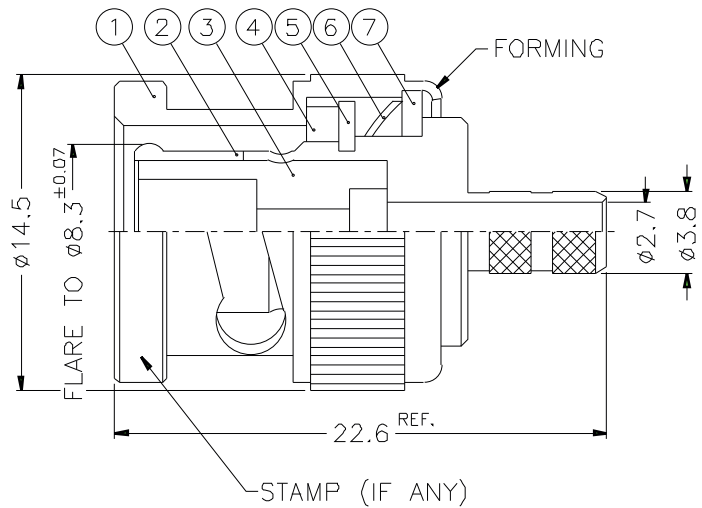


HT 485 CONN BNC



RECOMMENDED
CABLE STRIPPING DIM'S



- NOTES: FINISH (PLATING THICKNESS IN MICRO-INCHES)
1. BRASS PER QQ-B-626
 2. BRASS PER QQ-B-613
 3. NICKEL PL. 100 MIN. THICK OVER COPPER STRIKE
 4. NICKEL PL. 200 MIN. THICK OVER COPPER STRIKE
 5. GOLD PL. 3 MIN. THICK OVER NICKEL PL. 100 MIN. THICK OVER COPPER STRIKE
 6. JIS H 3260, C 3501

1. CRIMPED FERRULE
HEX CRIMP SIZE .178"
2. CRIMPED CONTACT PIN
HEX CRIMP SIZE .068"

| | | | | | |
|----|---------------|---------|---------|---|------------------|
| 10 | FERRULE | NOTE 6 | NOTE 3 | 1 | FR-52/44-38/3X14 |
| 9 | SLEEVE | DELTRIN | NATURAL | 1 | SL-25/17X129 |
| 8 | CONTACT PIN | NOTE 1 | NOTE 5 | 1 | B3000-8-25/D6 |
| 7 | WASHER | NOTE 2 | NOTE 3 | 1 | WS-128/9X08 |
| 6 | SPRING | SK5 | NOTE 4 | 1 | B50000-6 |
| 5 | RETAINER RING | NOTE 1 | NOTE 3 | 1 | B50000-5 |
| 4 | GASKET | RUBBER | RED | 1 | GS-115/8X15 |
| 3 | INSULATOR | DELTRIN | NATURAL | 1 | B50002-3-50 |
| 2 | BODY | NOTF 1 | NOTF 3 | 1 | B50002-2-38/27 |

DIMENSIONS ARE IN MILLIMETERS
UNLESS OTHERWISE SPECIFIED TOLERANCES

0.5-6 = ±0.2
6-30 = ±0.4
30-120 = ±0.6
120-315 = ±1
315-1000 = ±1.6

| | |
|-------|---|
| TITLE | BNC CRIMP PLUG (FOR RG-174/U,188A/U,316/U) |
|-------|---|