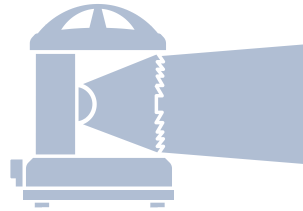


TECHNICAL MANUAL

DHR55N



MED96/98/EC



SINCE 1922

Den Haan Rotterdam



DISCLAIMER

Despite constant care and attention DHR puts in its manuals it is still possible that information in this manual is incomplete or incorrect.

We do not guarantee that the information in the manual is suitable for the purpose for which the information was consulted. All information is offered in the state in which it actually is and without any (implicit) guarantee or warranty regarding its validity or its suitability for a particular purpose or otherwise. All illustrations are for illustrative purposes only. This manual is not intended to cover every possible detail about the product.

We exclude all liability for any damages, direct or indirect, of any nature whatsoever, arising from or in any way connected with the use of this manual. In addition we are not liable for damages, direct or indirect, arising from the use of information obtained from this manual.

A user of this manual may not publish copyright protected works or other information from the manual or in any way reproduce the information without our permission. This also includes the reproduction of information or parts thereof by publication in an electronic (computer) network.



TABLE OF CONTENTS

Technical data	4
Product photo	5
Dimensions	6
Available models	7
Exploded view	8
Electrical specification	9
Lifetime control	10
Positioning side lights	11
Positioning all-round lights	12
Mounting instructions	13

TECHNICAL DATA

Application:

- As Navigation light for all sea-going vessels with a length less than 50m
- As Navigation light for all vessels in Rhine and European inland navigation
- As general signalling light

In compliance with:

- International Regulations for Preventing Collisions at Sea; COLREG 72 and latest amendments
- Rhine and European inland navigation rules
- The Directives 96/98/EC and 82/714/EC, following the European standard: EN 14744 (2005) AC(2006), Inland navigation vessels and sea-going vessels - navigation light

Materials:

- Housing, mat black, polycarbonate, reinforced with fibre glass
- Screen and mounting materials, stainless steel 316, seawater resistant, non-magnetic
- Fresnel lens, UV and shock resistant polycarbonate

Min. visibility:

Sector lights

Starboard - bright	2NM
Port - bright	2NM
Masthead - bright	5NM
Stern - bright	2NM
Towing - bright	2NM

All-round

White - bright	2NM
Manoeuvring	5NM
Red - bright	2NM
Green - bright	2NM
Yellow - bright	2NM
Blue - normal	1NM

Electrical insulation class:

III, (double insulated)

Protection class:

IP 56

Wiring:

PG13 Cable gland from below or side

Bulb:

- Bay15d 24V 25W 40cd
- Bay15d 12V 25W 40cd

Operation temperature:

-25°C up to +55°C

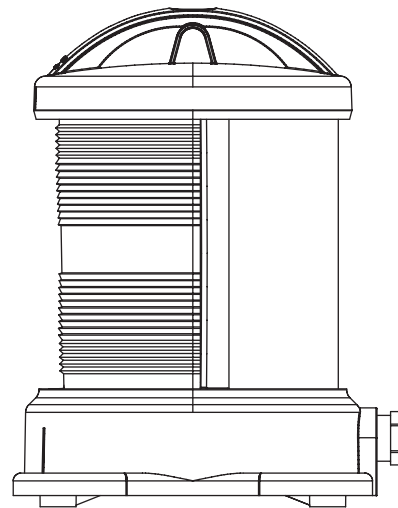
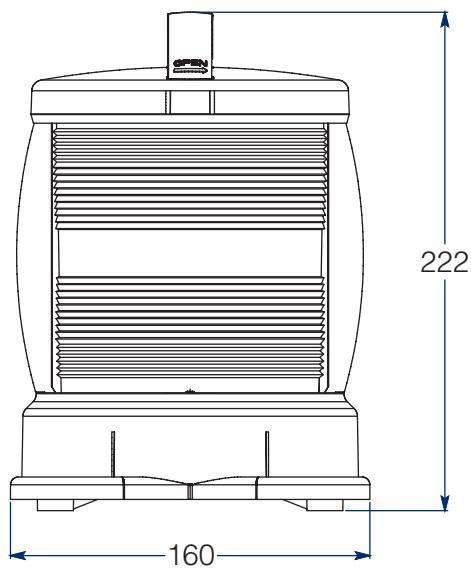
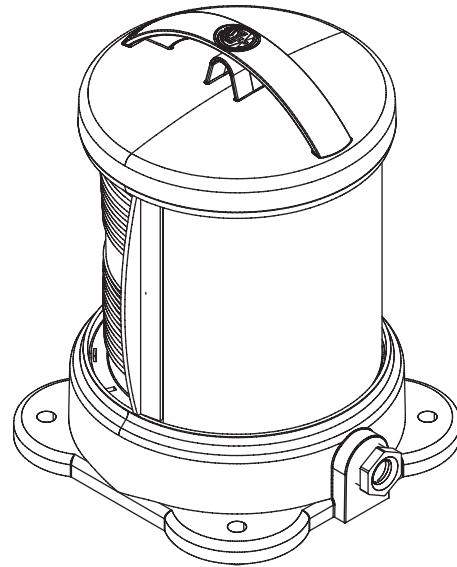
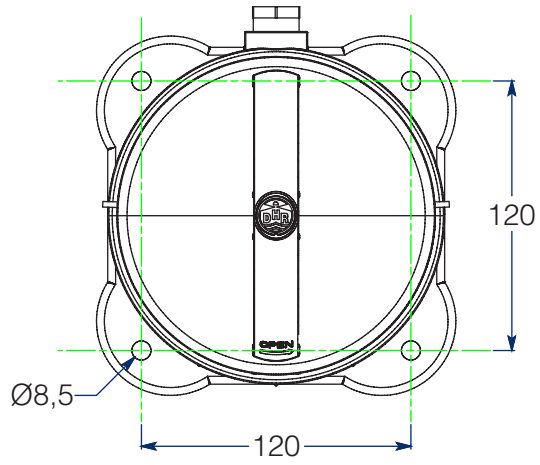
Mounting:

Base

PRODUCT PHOTO



DIMENSIONS



All dimensions in mm.



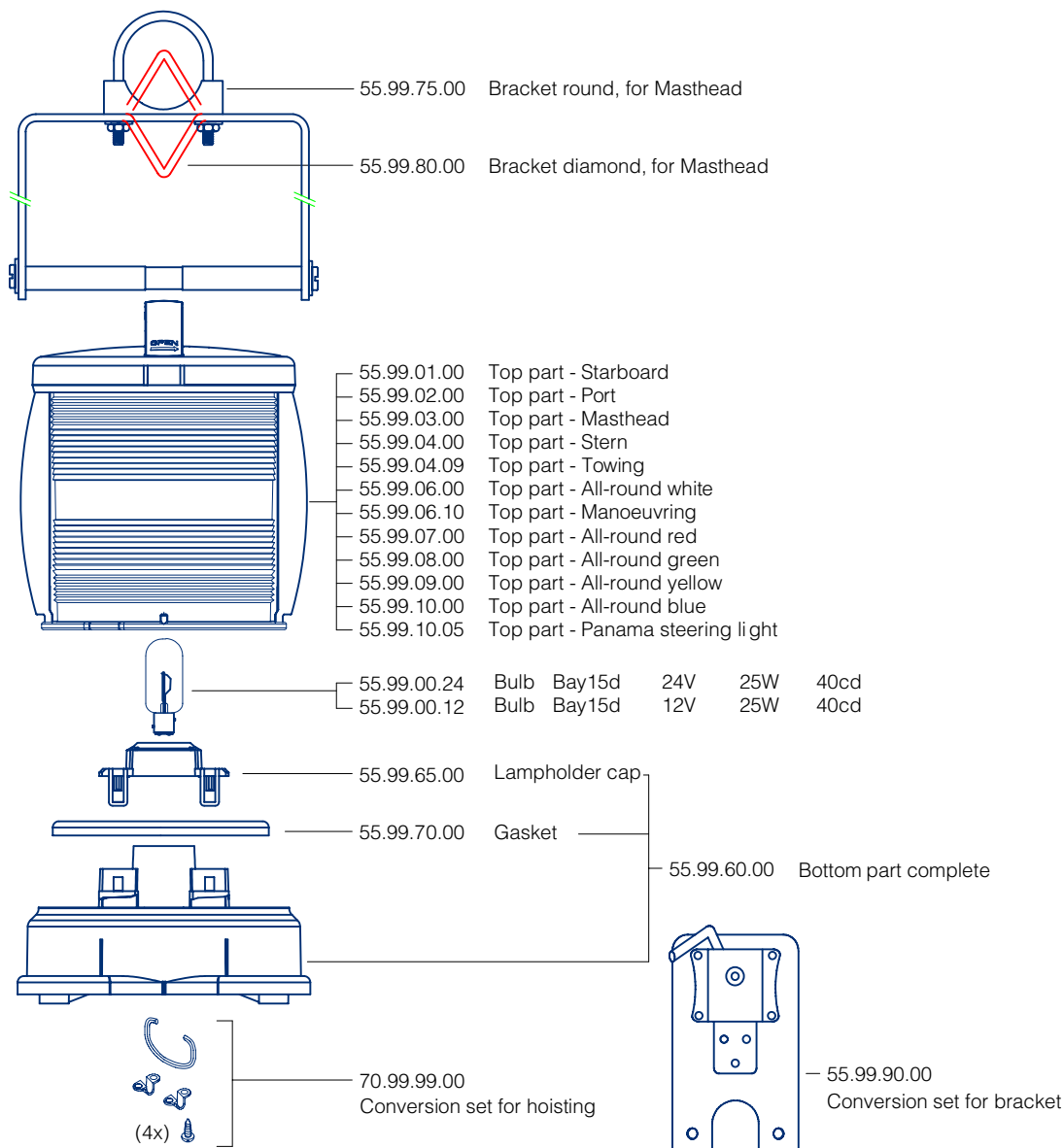
AVAILABLE MODELS

Sector lights	Min. Visibility	Lamp cap	Approval	Art. Code
Starboard	2 NM	Bay15d	MED	55.01.00.00
Port	2 NM	Bay15d	MED	55.02.00.00
Masthead	5 NM	Bay15d	MED	55.03.00.00
Stern	2 NM	Bay15d	MED	55.04.00.00
Towing	2 NM	Bay15d	MED	55.04.09.00

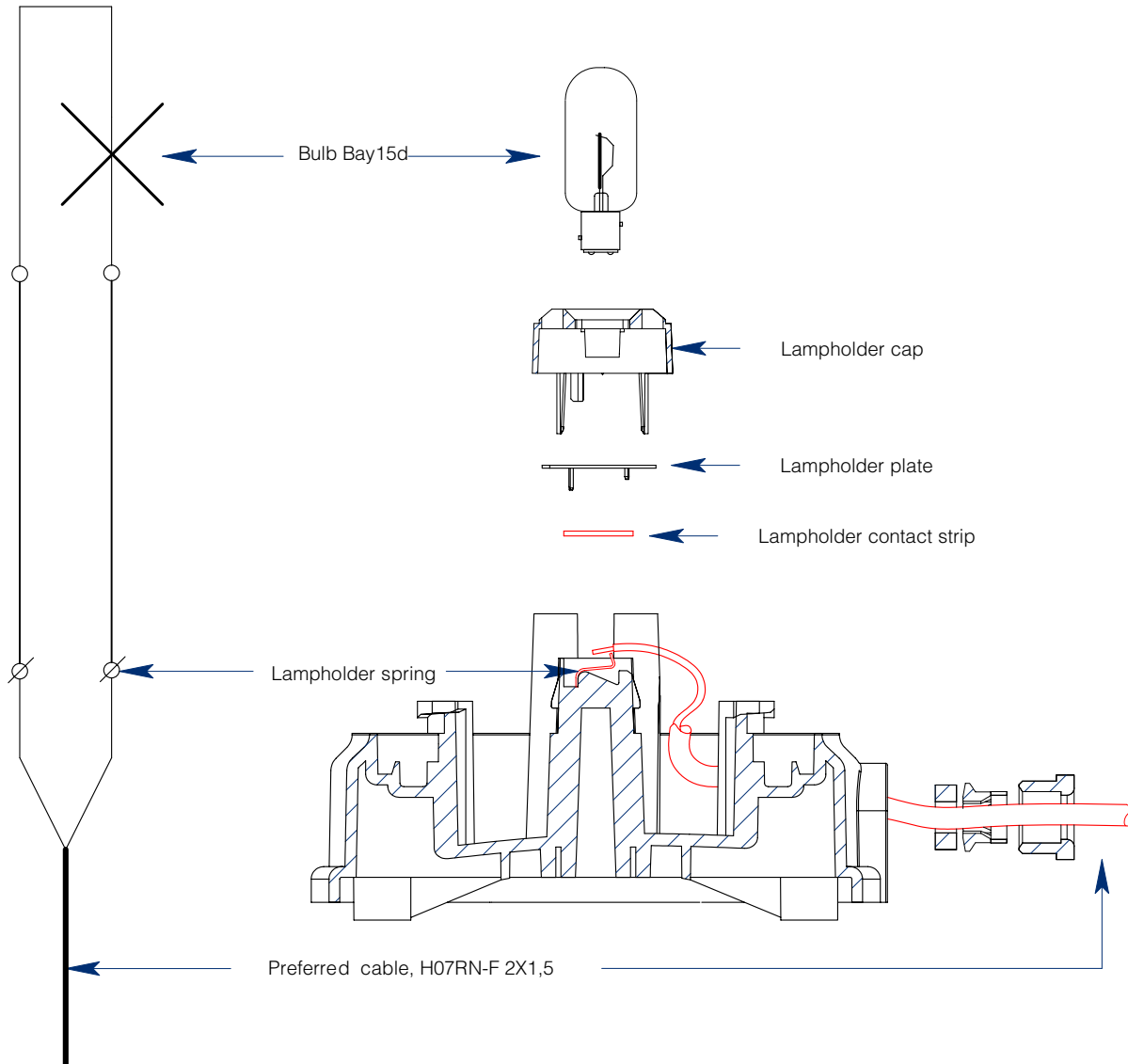
Special sector lights	Min. Visibility	Lamp cap	Approval	Art. Code
Panama steering light	-	Bay15d	-	55.10.00.05

All-round lights	Min. Visibility	Lamp cap	Approval	All-round	180° Screened
White	2 NM	Bay15d	MED	55.06.00.00	55.06.01.80
Manoeuvring	5 NM	Bay15d	MED	55.06.10.00	-
Red	2 NM	Bay15d	MED	55.07.00.00	55.06.01.80
Green	2 NM	Bay15d	MED	55.08.00.00	55.06.01.80
Yellow	2 NM	Bay15d	MED	55.09.00.00	55.09.01.80
Blue	1 NM	Bay15d	MED	55.10.00.00	-

EXPLODED VIEW



ELECTRICAL SPECIFICATION



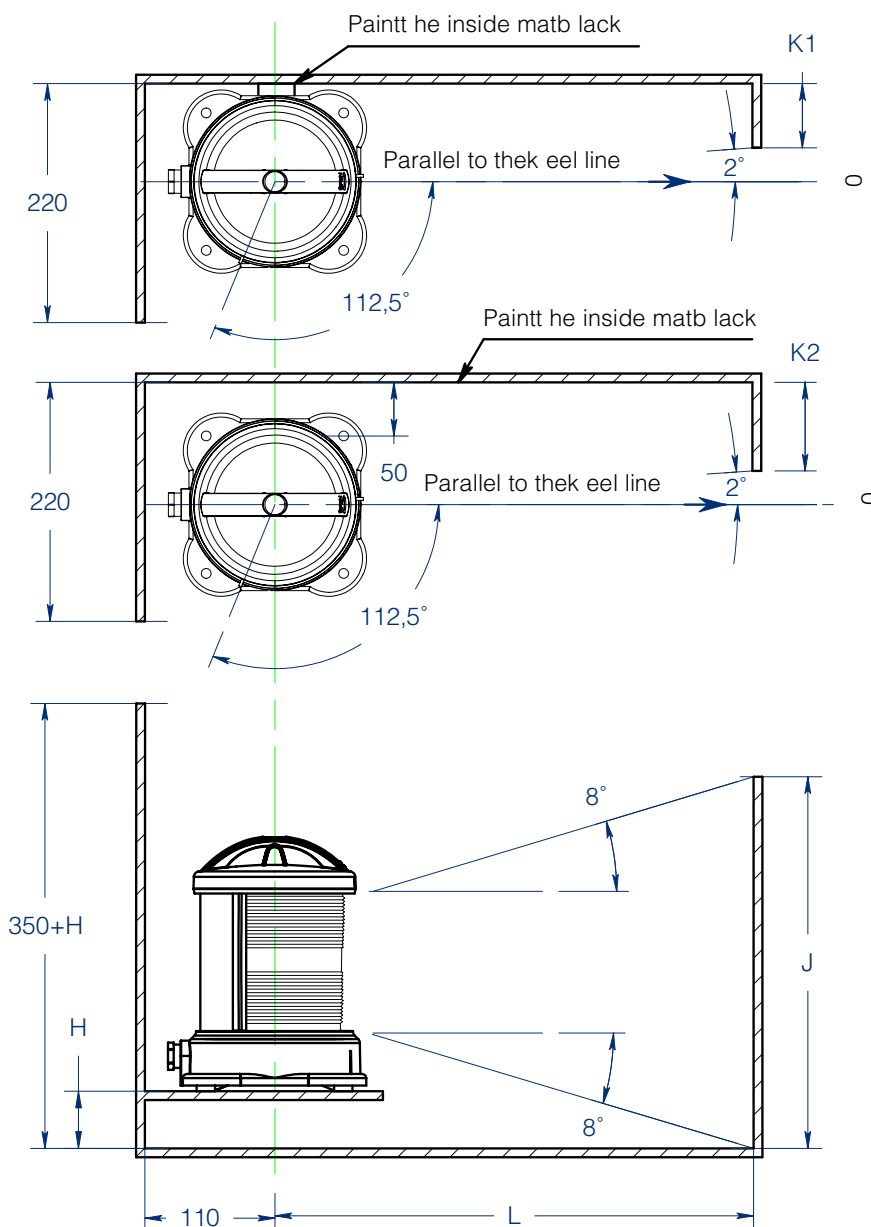


LIFETIME CONTROL

Measurements of the navigation light and specifications, show a conformity with the minimum requirements of COLREG 72. To guarantee a proper use of the Navigation lights, we as a manufacturer advise the following:

- Use the navigation light in combination with a DHR-specified control system, which monitors the status of the individual navigation light
- Use only an approved normalized bulbs Bay15d - 40cd
- Each navigation light needs to undergo a quality check at least every 5 years of use to verify it still meets the requirements of COLREG 72

POSITIONING SIDE LIGHTS



L	H	K1	K2	J
345	0	77	98	225
400	8	75	96	240
500	22	71	92	268
600	36	68	89	296
700	50	65	86	324
800	64	61	82	352
910	79	57	78	383

Disclaimer:

- The minimum luminous intensity requirements in the forward direction are only guaranteed if the side-lights are mounted in accordance with this drawing and table.
- This is an illustration to indicate the dimensions of the inboard screens, relative to the keel line of the vessel. By no means may this image be used to determine the position of the sidelights on the vessel. For positioning the lights at the vessel always check for compliance with COLREG 72 or local rules.

POSITIONING ALL-ROUND LIGHTS

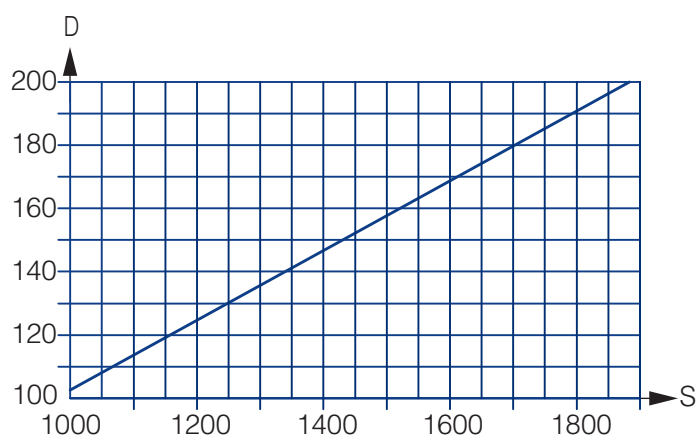
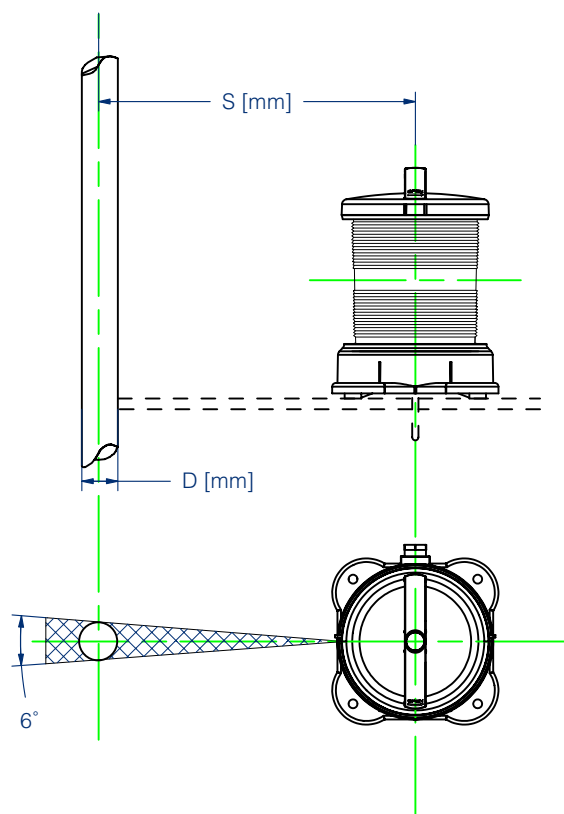
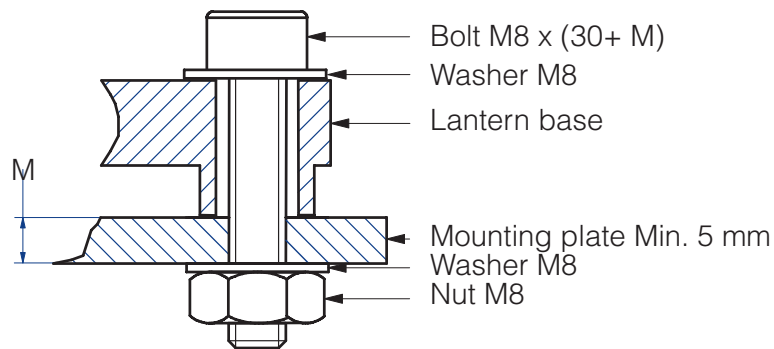


Diagram for choosing the minimum distance between obstacle and mounting plate.

Disclaimer:

This is an illustration to indicate the position of the all-round light so not to be obscured by mast, topmasts or structures within the angular sector of more than 6 degrees. By no means may this image be used to determine the position of the all-round lights on the vessel. For positioning the lights on the vessel always check for compliance with COLREG 72 or local rules.

MOUNTING INSTRUCTIONS



All dimensions in mm

Mounting plate

The mounting plate for navigation lights should be at least 5 mm thick and should not exceed a parallelism of // 00,5.

Fasteners

- The permissible torque should be 8 Nm
- Use only A4-grade stainless steel

Important

Do not paint or use any other chemical for the lanterns, clean only with fresh water.

ADVANCED MARITIME SIGNALLING SOLUTIONS



Den Haan Rotterdam
Fascinatio Boulevard 1182
2909 VA Capelle a/d IJssel
The Netherlands
T +31 (0) 10 413 07 55
E sales@dhr.nl
www.dhr.nl